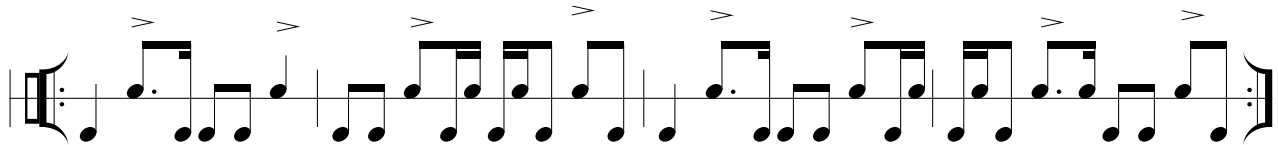


RIM 1230: Proficiency no. 8

Part 1: Rhythm. Perform the rhythm below. Play the lower line with your right hand using a deeper sound (like hitting the table with your fist) to mimic a kick drum. Play the upper line with your left hand using a higher sound (like slapping the table) to mimic a snare drum. You do not have to speak the rhythm syllables. Notice that the rhythm ****REPEATS****. The tempo should be between 70 and 90 BPM, and **you must perform with a click track**.



Part 2: Keyboard. Play the 9-bar chord progression below on your piano keyboard in a 4/4 meter. You can choose any tempo, but you should perform with a click track. You can choose any key **EXCEPT** C major, G major, or F major. You can choose whatever comping or rhythmic pattern to play the chord progression, as long as it follows the click track and each chord lasts a bar.

The progression should be played with two hands, with one bass note in your left hand and three notes in your right hand (with whatever else is needed to fill out the chord). The chords are all diatonic within the major key, but notice that almost all of them contain chordal sevenths!

IMPORTANT: You **MUST** use **SMOOTH** voice leading in the right hand as you connect the chords, as explained in class and the help video. In order for me to see your voice-leading, your hands should be visible in the video. (Just peek your face into view at the beginning of the video.)

1^{Δ7} 4^{Δ7} 2⁻⁷ 5⁷
3⁻⁷ 6⁻⁷ 4^{Δ7} $\frac{4}{5}$
1^{Δ7}

FYI: The chord in the eighth bar is a 4/5 chord. To play this chord, play scale-degree 5 in the left hand (the bass) and play a regular 4 chord in the right hand. In the key of C major, for example, it would be the note G in the bass with an F major triad in the right hand.

• • • PLEASE WATCH THE HELP VIDEO FOR THIS PROFICIENCY (ON D2L) • • •

RIM 1230 Proficiency Grading:

You can submit one, unedited video for each part, or you can submit a single video for both parts. **All Proficiency videos MUST BEGIN OR END with you showing your face to the camera and stating your name;** otherwise, you will receive a 0%.

Each of the two parts is graded based on the errors you make for each part total:

- No errors = 100%
- One error = 90%
- Two errors = 80%
- Three errors = 70%
- Four or more errors = 1%

In other words, you will receive no credit if your video contains more than three errors. Rhythms without conducting or drastically under tempo will be scored as having four errors (i.e., 0%). If you need a small tempo modification on the rhythm, that will be graded as one error. Conducting mistakes count toward your error total.

Videos should be uploaded to the Proficiency Hand-in Folder (under “Content”) in D2L.

You may resubmit the Proficiency if you are not satisfied with your original grade. The grading scale for resubmissions is:

- No errors = 90%
- One error = 80%
- Two errors = 70%
- Three errors = 60%
- Four or more errors = 2%

Proficiency parts that are submitted after the due date incur a 10% penalty, as if it is a resubmission. Resubmissions will not incur an additional late penalty.

Proficiency submissions (or resubmissions) will not be accepted after the close date for the assignment.