

## RIM 1230: Proficiency no. 1

**Part 1: Rhythm.** Perform the rhythm below, counting it as we do in class (e.g., 1 and, 2 and, etc.). **You must CONDUCT as you perform** (DOWN on beat 1, IN on beat 2, OUT on beat 3, and UP on beat 4). Tempo must be at least 90 BPM, and you should perform with a click track or drum beat.



**Part 2: Keyboard.** Play the major scale pattern shown below in **Figure 1**—which goes from scale degree 1 up to 5 by step, skips **DOWN** to scale degree 5 an octave lower, and then goes back up to scale degree 1 by step—starting on each of the following six notes:

D = 1

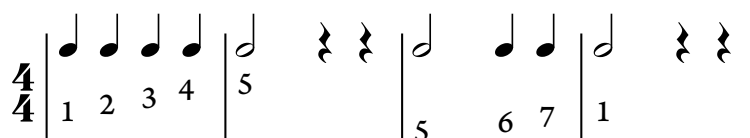
F = 1

G = 1

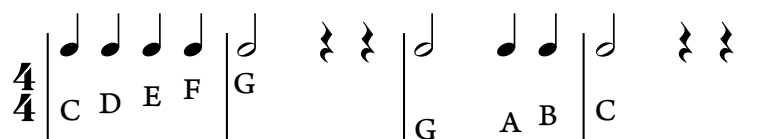
B $\flat$  = 1

In other words, you will be submitting **FOUR** scale degree patterns, all recorded in the same video. The tempo is up to you, **but you must perform with a click track** and follow the rhythm shown. Use all five fingers (including your thumb) to play the notes in the first bar. You may play the notes in the second bar with the same hand or your other hand. (Watch the help video for further advice.)

**Figure 1:**



Here is an example of what the pattern would be with C = 1:



**IMPORTANT:** As you play the notes on the keyboard, **you must SAY the NAMES of the notes** as you play them (e.g., “B-flat” or “F-sharp”). You must record and submit these scale degree patterns in a single, UNEDITED video. (You may pause briefly between each new two-bar pattern to reorient yourself to the new tonic.) Feel free to use the key signatures on the circle of fifths or the pattern of M2 and m2 intervals in a major scale to spell out each scale beforehand.

**• • • PLEASE WATCH THE HELP VIDEO FOR THIS  
PROFICIENCY (LINKED ON D2L) • • •**

See the next page for the grading rubric. You **MUST** show your face and say your name in at least the beginning or end of each video you hand in!

## **RIM 1230 Proficiency Grading:**

You can submit one, unedited video for each part, or you can submit a single video for both parts. **All Proficiency videos MUST BEGIN OR END with you showing your face to the camera and stating your name;** otherwise, you will receive a 0%.

Each of the two parts is graded based on the errors you make for each part total:

- No errors = 100%
- One error = 90%
- Two errors = 80%
- Three errors = 70%
- Four or more errors = 1%

In other words, you will receive no credit if your video contains more than three errors. Rhythms without conducting or drastically under tempo will be scored as having four errors (i.e., 0%). If you need a small tempo modification on the rhythm, that will be graded as one error. Conducting mistakes count toward your error total.

Videos should be uploaded to the Proficiency Hand-in Folder (under “Content”) in D2L.

**You may resubmit the Proficiency if you are not satisfied with your original grade.** The grading scale for resubmissions is:

- No errors = 90%
- One error = 80%
- Two errors = 70%
- Three errors = 60%
- Four or more errors = 2%

Proficiency parts that are submitted after the due date incur a 10% penalty, as if it is a resubmission. Resubmissions will not incur an additional late penalty.

**Proficiency submissions (or resubmissions) will not be accepted after the close date for the assignment.**