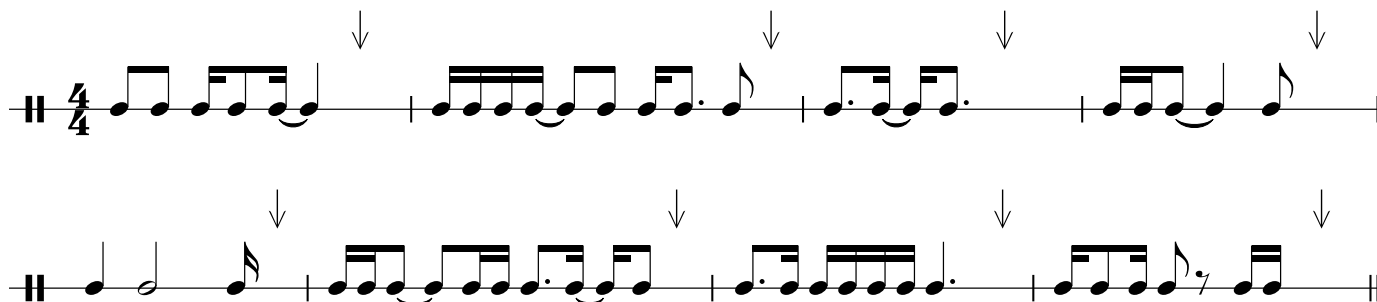


Name: \_\_\_\_\_

## RIM 3450, Test 1

(The best 5 out of 6 sections will be used to calculate the total grade.)

**Part 1:** At each arrow, add a SINGLE note that completes the measure rhythmically (in 4/4).



**Part 2:** Given a scale degree from a major key, spell the seventh chord built on that scale degree in that key. For example, the seventh chord on  $\hat{2}$  in C is: D, F, A, C.

$\hat{3}$  in E \_\_\_\_\_

$\hat{1}$  in  $E^b$  \_\_\_\_\_

$\hat{5}$  in  $F^\sharp$  \_\_\_\_\_

$\hat{2}$  in G \_\_\_\_\_

$\hat{6}$  in A \_\_\_\_\_

$\hat{3}$  in  $B^b$  \_\_\_\_\_

$\hat{4}$  in  $G^b$  \_\_\_\_\_

$\hat{4}$  in  $D^b$  \_\_\_\_\_

**Part 3:** For each chord below, list all of the notes (e.g., root, third, fifth, seventh) that would be part of the chord (for example: C, E, G, B).

$E m6$  \_\_\_\_\_

$F7sus4$  \_\_\_\_\_

$G^\sharp 2$  \_\_\_\_\_

$B m2$  \_\_\_\_\_

$B^b 7sus4$  \_\_\_\_\_

$D^b sus2$  \_\_\_\_\_

$A6$  \_\_\_\_\_

$C^\sharp sus4$  \_\_\_\_\_

**Part 4:** You will hear a series of chords in root position. Identify whether each is a:

- sus4 chord (sus4)
- major triad (maj)
- major seventh chord (maj7)
- dominant seventh chord (dom7)
- minor triad (min)
- minor seventh chord (min7)
- dominant seventh sus4 chord (dom7sus4)

**Type:**

1

2

3

4

5

6

7

8

**Part 5:** Using Nashville numbers, write the 4-bar chord progression of the musical examples that are played. The chords are limited to 1, 2m, 3m, 4, 5, and 6m only. The first chord of each progression is given.

a) 1 \_\_\_\_\_

c) 6- \_\_\_\_\_

b) 1 \_\_\_\_\_

d) 6- \_\_\_\_\_

**Part 6:** In the space below, write out the RHYTHM of the synth melody that is played. Show BOTH the rhythm syllables AND traditional notation. Use bar lines as appropriate.